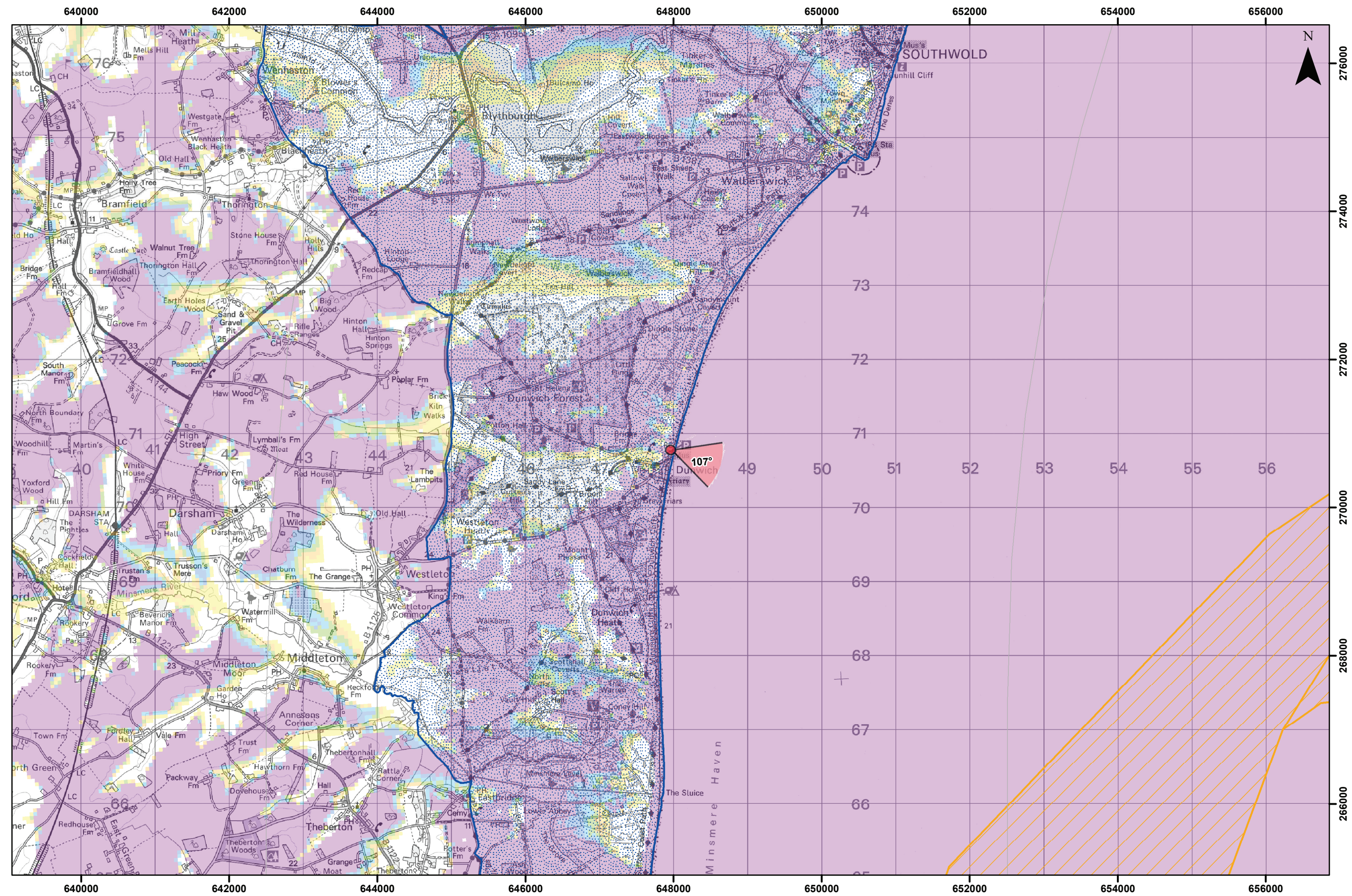


**Viewpoint Location Plan - 90 Degree View**  
Scale: 1:350,000



**Viewpoint Location Plan - 53.5 Degree View**  
Scale: 1:50,000



- Legend**
- Site Boundary
  - Proposed Cable Corridor
  - East Anglia TWO 300m Wind Turbine Layout
  - Indicative Accommodation Platform
  - Indicative Offshore Substation Platform (OSS)
  - ▲ Indicative Operational Meteorological Mast (OMM)
  - 10km Radii
  - 50km SLVIA Study
  - County Boundary
  - District Boundary
  - Suffolk Coast & Heaths AONB
- Cumulative Wind Energy Development:**
- Cumulative Turbine Locations
  - Active/In Operation
  - Pre-planning
- Blade Tip ZTV**
- No. of Blade Tips Theoretically Visible**
- 1 - 10
  - 11 - 20
  - 21 - 30
  - 31 - 40
  - 41 - 50
  - 51 - 60
- ▼ 90° Field of View
  - ▼ 53.5° Field of View

3	30/08/2019	LA	Second issue		
2	13/08/2019	LA	Second issue	Prepared:	TH
1	14/05/2019	TH	First issue	Checked:	SM
Rev	Date	By	Comment	Approved:	LT

© Crown copyright and database rights 2018. Ordnance Survey 100031873. The Crown Estate © Crown Copyright (2019).  
© Natural England copyright. Contains Ordnance Survey data © Crown copyright and database right 2019.  
This map has been produced to the latest known information at the time of issue, and has been produced for your information only.  
Please consult with the SFR Customer GIS team to ensure the content is still current before using the information contained on this map.  
To the fullest extent permitted by law, we accept no responsibility or liability (whether in contract, tort (including negligence) or otherwise) in respect of any errors or omissions in the information contained in the map and shall not be liable for any loss, damage or expense caused by such errors or omissions.  
ZTV: Created using ESRI ArcGIS 10.8 software and the following data and parameters:  
Blade to height: 300m  
OTM Scale: 0.5  
OTM Resolution: 50m  
Observer height: 2m  
No surface features, such as buildings or trees, were included in the analysis.  
Earth curvature and light refraction has been included in calculations.

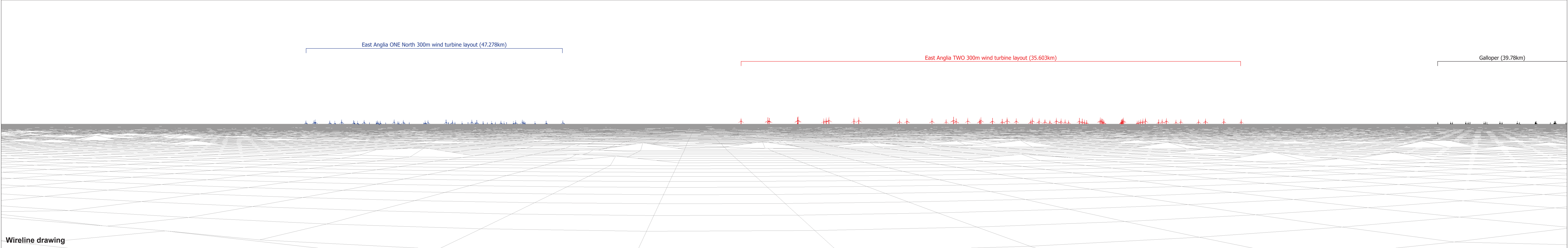
<b>East Anglia TWO</b>		
Viewpoint: 7 Dunwich		
<b>Drg No</b>	EA2-DWF-ENV-REP-IBR-000920	
<b>Rev</b>	3	Datum: WGS 1984
<b>Date</b>	30/08/19	Projection: Zone 31N
<b>Figure</b>	28.31a	





Existing photograph

This image provides landscape and visual context only

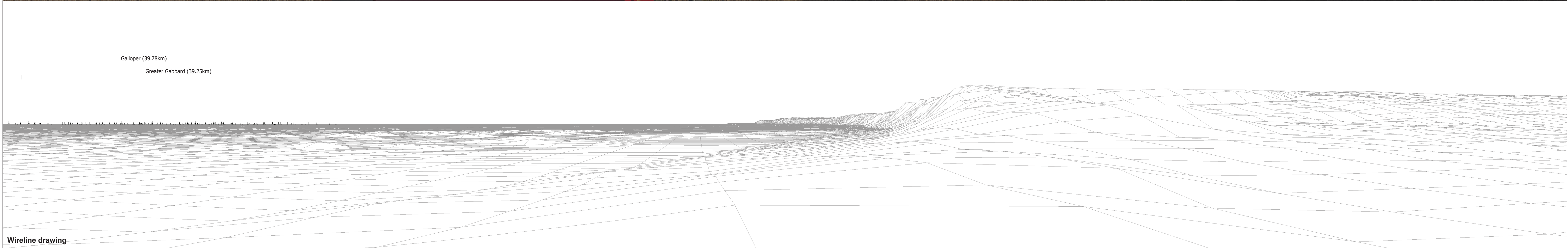


Wireline drawing

<b>OS reference:</b> 647961 E 270777 N	<b>Horizontal field of view:</b> 90° (cylindrical projection)	<b>Camera:</b> Canon EOS 6D
<b>Eye level:</b> 6.34 m AOD	<b>Principal distance:</b> 522 mm	<b>Lens:</b> 50mm (Canon EF 50mm f/1.4)
<b>Direction of view:</b> 95°		<b>Camera height:</b> 1.5 m AGL
<b>Nearest turbine:</b> 35.603 km		<b>Date and time:</b> 13/07/18, 18:23

**Figure: 28.31b**  
**Viewpoint 7: Dunwich**

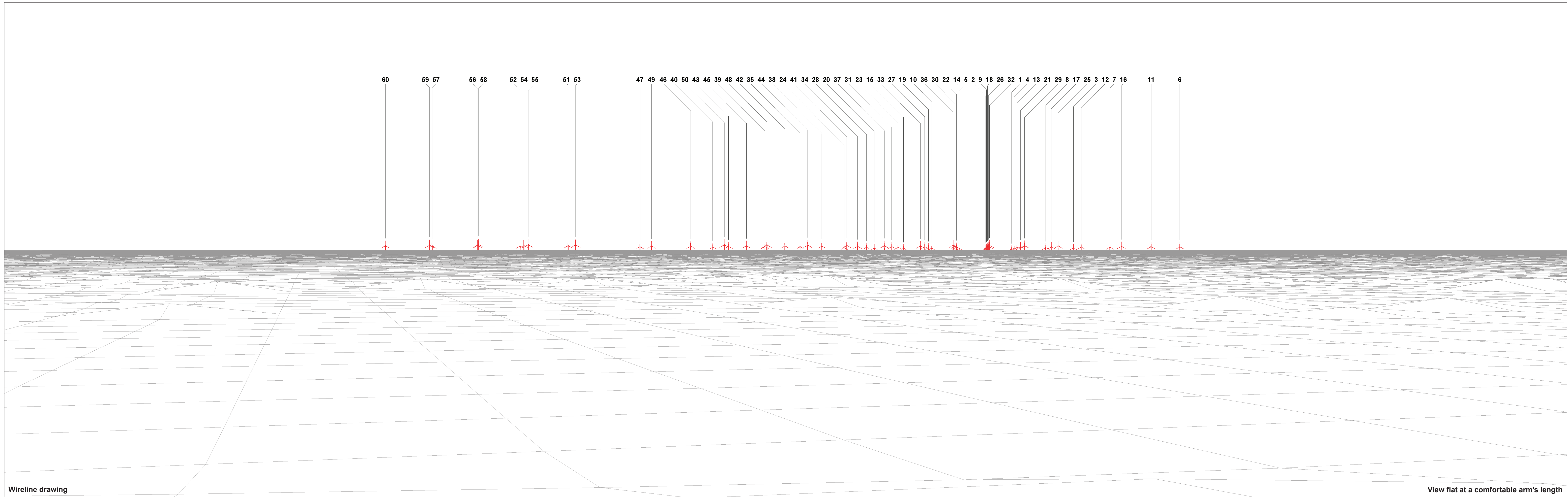




<b>OS reference:</b>	647961 E 270777 N	<b>Horizontal field of view:</b>	90° (cylindrical projection)	<b>Camera:</b>	Canon EOS 6D
<b>Eye level:</b>	6.34 m AOD	<b>Principal distance</b>	522 mm	<b>Lens:</b>	50mm (Canon EF 50mm f/1.4)
<b>Direction of view:</b>	185°			<b>Camera height:</b>	1.5 m AGL
<b>Nearest turbine:</b>	35.603 km			<b>Date and time:</b>	13/07/18, 18:23

**Figure: 28.31c**  
**Viewpoint 7: Dunwich**





Wireline drawing

View flat at a comfortable arm's length

OS reference: 647961 E 270777 N  
 Eye level: 6.34 m AOD  
 Direction of view: 107°  
 Nearest turbine: 35.603 km

Horizontal field of view: 53.5° (planar projection)  
 Principal distance: 812.5 mm  
 Paper size: 841 x 297 mm  
 Correct printed image size: 820 x 260 mm

Camera: Canon EOS 6D  
 Lens: 50mm (Canon EF 50mm f/1.4)  
 Camera height: 1.5 m AGL  
 Date and time: 13/07/18, 18:23

Figure: 28.31d  
 Viewpoint 7: Dunwich





Photomontage

View flat at a comfortable arm's length

<b>OS reference:</b> 647961 E 270777 N	<b>Horizontal field of view:</b> 53.5° (planar projection)	<b>Camera:</b> Canon EOS 6D
<b>Eye level:</b> 6.34 m AOD	<b>Principal distance:</b> 812.5 mm	<b>Lens:</b> 50mm (Canon EF 50mm f/1.4)
<b>Direction of view:</b> 107°	<b>Paper size:</b> 841 x 297 mm	<b>Camera height:</b> 1.5 m AGL
<b>Nearest turbine:</b> 35.603 km	<b>Correct printed image size:</b> 820 x 260 mm	<b>Date and time:</b> 13/07/18, 18:23

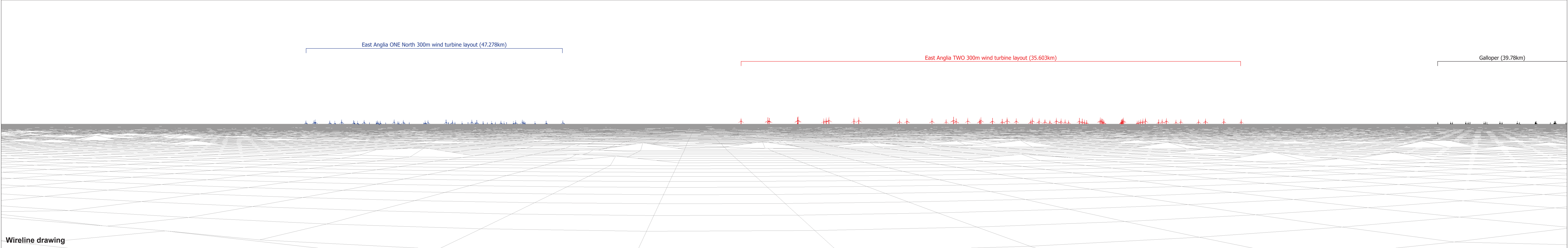
**Figure: 28.31e**  
**Viewpoint 7: Dunwich**





Existing photograph

This image provides landscape and visual context only



Wireline drawing

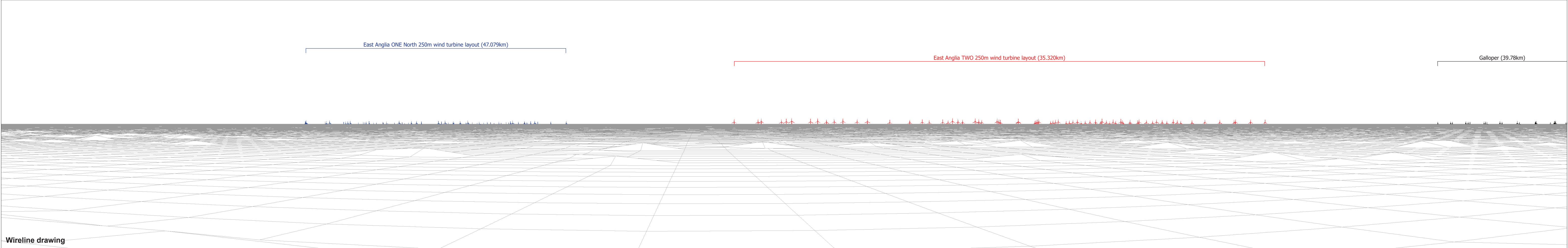
<b>OS reference:</b>	647961 E 270777 N	<b>Horizontal field of view:</b>	90° (cylindrical projection)	<b>Camera:</b>	Canon EOS 6D	<b>Figure: 28.31f</b> <b>Viewpoint 7: Dunwich</b>
<b>Eye level:</b>	6.34 m AOD	<b>Principal distance</b>	522 mm	<b>Lens:</b>	50mm (Canon EF 50mm f/1.4)	
<b>Direction of view:</b>	95°			<b>Camera height:</b>	1.5 m AGL	
<b>Nearest turbine:</b>	35.603 km			<b>Date and time:</b>	13/07/18, 18:23	





Existing photograph

This image provides landscape and visual context only



Wireline drawing

<b>OS reference:</b>	647961 E 270777 N	<b>Horizontal field of view:</b>	90° (cylindrical projection)	<b>Camera:</b>	Canon EOS 6D	<b>Figure: 28.31g</b> <b>Viewpoint 7: Dunwich</b>
<b>Eye level:</b>	6.34 m AOD	<b>Principal distance</b>	522 mm	<b>Lens:</b>	50mm (Canon EF 50mm f/1.4)	
<b>Direction of view:</b>	95°			<b>Camera height:</b>	1.5 m AGL	
<b>Nearest turbine:</b>	35.320 km			<b>Date and time:</b>	13/07/18, 18:23	